



**AQUIND Limited**

---

# **AQUIND INTERCONNECTOR**

## Indicative Converter Station Elevations

The Planning Act 2008

The Infrastructure Planning (Applications: Prescribed Forms and Procedure) Regulations 2009 – Regulation 5(2)(o)

Document Ref: 2.8

PINS Ref.: EN020022

**AQUIND Limited**

---

# **AQUIND INTERCONNECTOR**

## Indicative Converter Station Elevations

**PINS REF.: EN020022**

**DOCUMENT: 2.8**

**DATE: 14 NOVEMBER 2019**

WSP

WSP House

70 Chancery Lane

London

WC2A 1AF

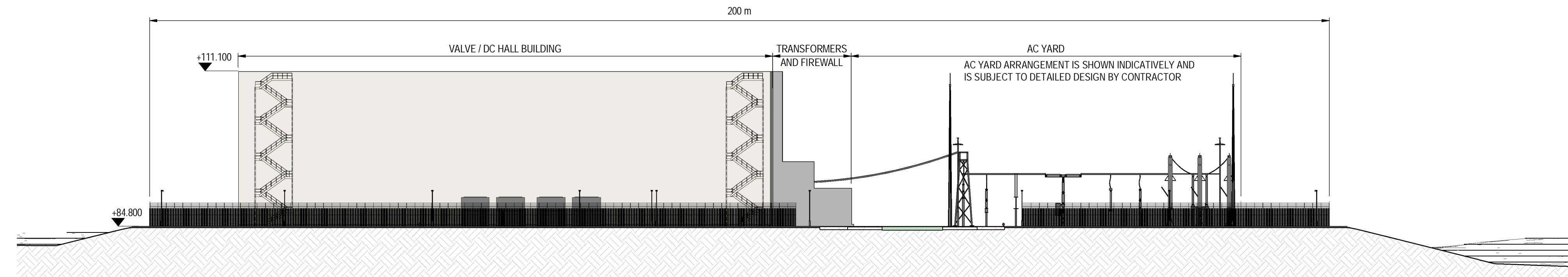
+44 20 7314 5000

[www.wsp.com](http://www.wsp.com)

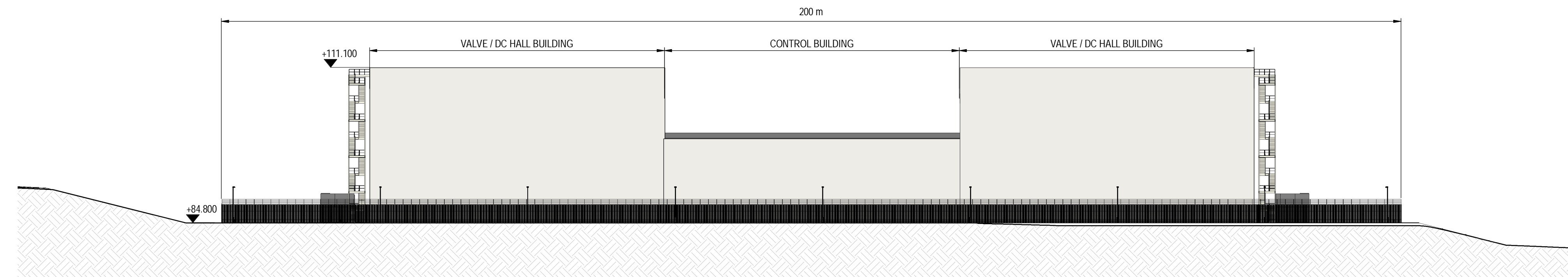
## CONTENTS

EN020022-2.8-EL-Sheet1	Application document reference 2.8 Indicative Converter Station Elevations Sheet 1 of 2
EN020022-2.8-EL-Sheet2	Application document reference 2.8 Indicative Converter Station Elevations Sheet 2 of 2

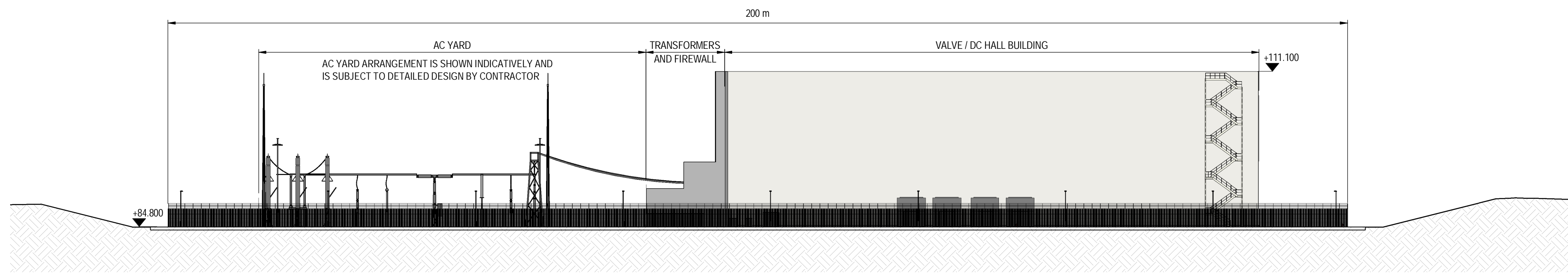
---



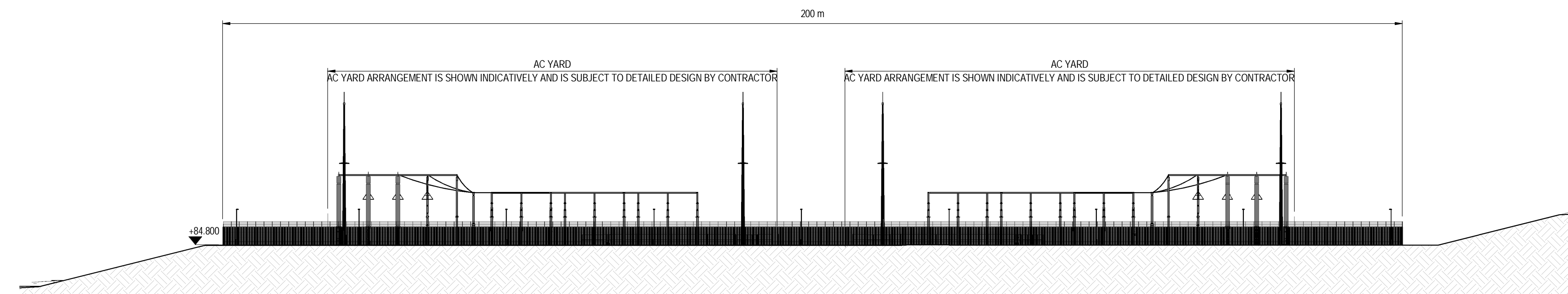
**ELEVATION EL-S**  
1 : 500 EN020022-2.7-LAY-Sheet1



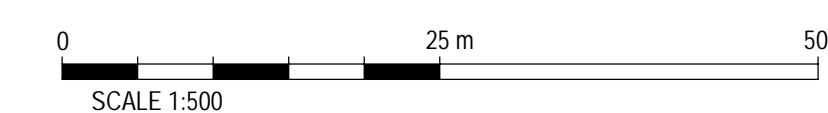
**ELEVATION EL-W**  
1 : 500 EN020022-2.7-LAY-Sheet1



**ELEVATION EL-N**  
1 : 500 EN020022-2.7-LAY-Sheet1



**ELEVATION EL-E**  
1 : 500 EN020022-2.7-LAY-Sheet1



**NOTES:**

1. BUILDING CLADDING TO ROOF AND ELEVATIONS IS SHOWN INDICATIVELY.
2. ROOF PROFILE IS SHOWN INDICATIVELY.
3. GROUND PROFILE ADJACENT TO CONVERTER STATION IS SHOWN INDICATIVELY.

Infrastructure Planning (Applications: Prescribed Forms & Procedure) Regulations 2009 - Regulation 5(2)(o)

REV	DATE	BY	DESCRIPTION	CHK	APP
01	17/10/19	PB	FIRST ISSUE	HM	LP

DRAWING STATUS: **ILLUSTRATIVE**



WSP House, 70 Chancery Lane, London WC2A 1AF  
Tel: +44 20 7314 5000 Fax: +44 20 7314 5111  
wsp.com



PROJECT: **AQUIND Interconnector**

TITLE: **Application document reference 2.8  
Indicative Converter Station Elevations  
Sheet 1 of 2**

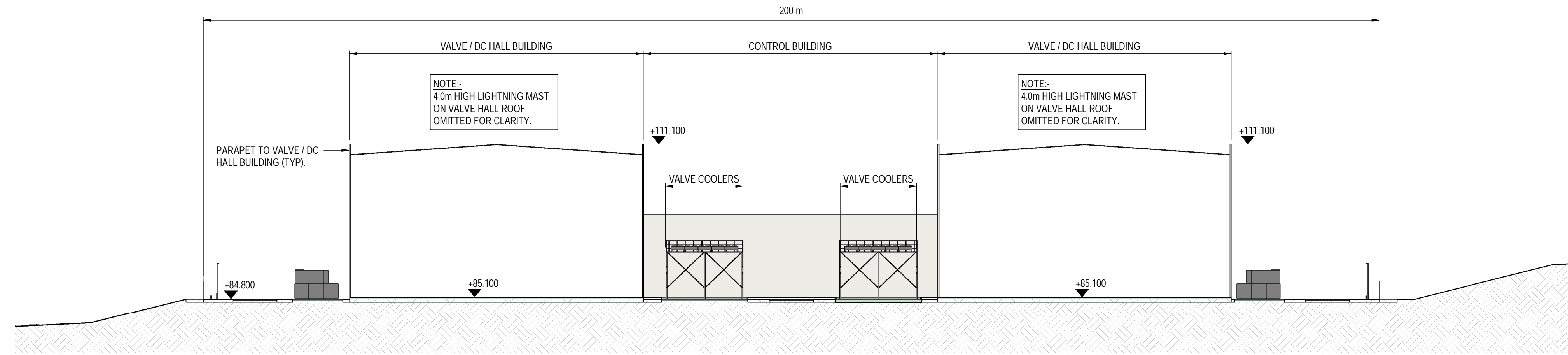
SCALE AT A1: 1:500	CHECKED: HM	APPROVED: LP
-----------------------	----------------	-----------------

PROJECT No: EN020022	DESIGNED: CA	DRAWN: PT	DATE: 17/10/19
-------------------------	-----------------	--------------	-------------------

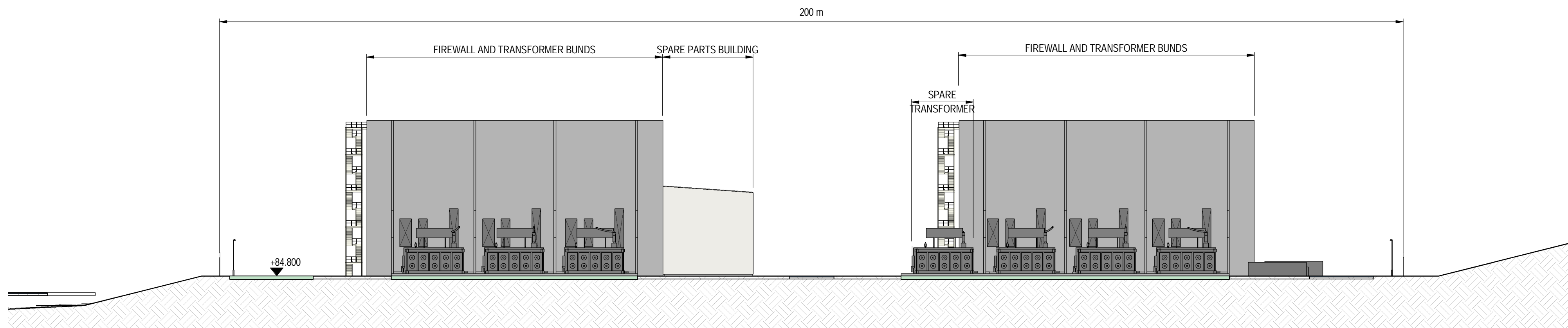
DRAWING No: <b>EN020022-2.8-EL-Sheet1</b>	REV: <b>01</b>
--	-------------------

© WSP UK Ltd

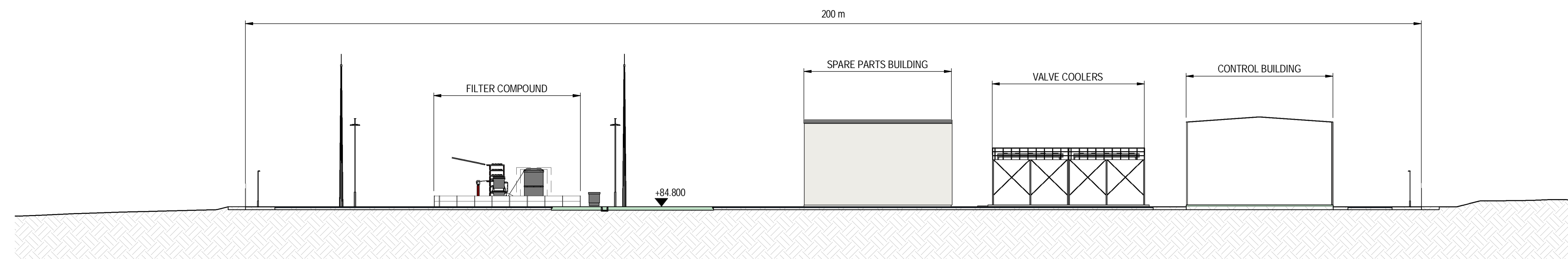




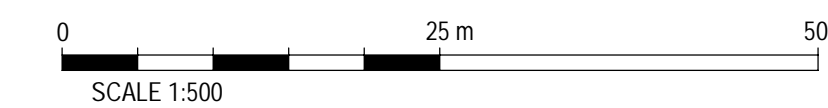
**SECTION S-NS1**  
1:500 EN020022-2.7-LAY-Sheet1



**SECTION S-NS2**  
1:500 EN020022-2.7-LAY-Sheet1



**SECTION S-EW2**  
1:500 EN020022-2.7-LAY-Sheet1



- NOTES:**
- BUILDING CLADDING TO ROOF AND ELEVATIONS IS SHOWN INDICATIVELY.
  - ROOF PROFILE IS SHOWN INDICATIVELY.
  - GROUND PROFILE ADJACENT TO CONVERTER STATION IS SHOWN INDICATIVELY.

Infrastructure Planning (Applications: Prescribed Forms & Procedure) Regulations 2009 - Regulation 5(2)(o)

REV	DATE	BY	DESCRIPTION	CHK	APP
01	17/10/19	PB	FIRST ISSUE	HM	LP

DRAWING STATUS: **ILLUSTRATIVE**



WSP House, 70 Chancery Lane, London WC2A 1AF  
Tel: +44 20 7314 5000 Fax: +44 20 7314 5111  
wsp.com



PROJECT: **AQUIND Interconnector**

TITLE: **Application document reference 2.8  
Indicative Converter Station Elevations  
Sheet 2 of 2**

SCALE AT A1: 1:500	CHECKED: HM	APPROVED: LP
-----------------------	----------------	-----------------

PROJECT No: EN020022	DESIGNED: CA	DRAWN: PT	DATE: 17/10/19
-------------------------	-----------------	--------------	-------------------

DRAWING No: <b>EN020022-2.8-EL-Sheet2</b>	REV: <b>01</b>
--	-------------------

© WSP UK Ltd